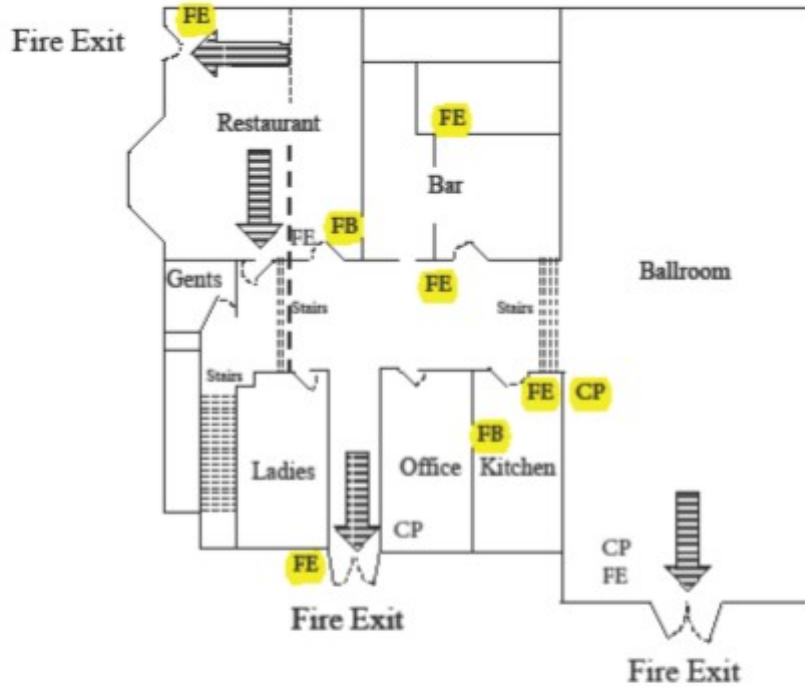


**IMPORTANT:** IF THE FIRE ALARM ACTIVATES THE HIRER MUST ENSURE THE BUILDING IS EVACUATED IMMEDIATELY TO OUR ASSEMBLY POINT IN THE PLEASANCE CAR PARK NEXT TO THE ONGAR LIBRARY ON THE OPPOSITE SIDE OF THE HIGH STREET.

**Budworth Hall Fire Exits and Equipment**

Ground Floor



First Floor

- FE Fire Extinguisher
- FB Fire Blanket
- CP Call Point

